

Team-Based Development in the PowerCenter Repository and the Model Repository

Abstract

Team-based development is the collaboration of team members on a development project. Both the PowerCenter repository and the Model repository contain team-based development features, such as versioning and the ability to check out and check in objects. The list and method of implementation of team-based development features depends on the repository type. This article compares team-based development features in the PowerCenter repository and the Model repository.

Supported Versions

- Informatica Power Center, Informatica Data Services, Informatica Data Quality, Big Data Management 10.0

Table of Contents

Overview	2
Team-based Development Features.	3
Versioning Repository Objects.	3
Check Out and Check In Objects.	4
Checking Out and Checking In Objects from the PowerCenter Repository.	4
Checking Out and Checking In Objects from the Model Repository.	4
View a List of Checked Out Objects.	4
Viewing a List of Checked Out PowerCenter Repository Objects.	4
Viewing a List of Checked Out Model Repository Objects	5
View and Open Historical Versions of Objects.	6
View PowerCenter Repository Historical Objects	6
Viewing and Opening Model Repository Historical Objects.	6

Overview

You can use team-based development features in the PowerCenter repository and the Model repository. Both repositories support some team-based development features. Some features are supported in only one repository. This article compares and contrasts PowerCenter repository and Model repository team-based development features.

Note: When a feature is available in only one repository, this article does not discuss it. To see how to use that feature, see the user documentation.

Team-based Development Features

Team-based development is available as an option in PowerCenter, and as a standard feature of the Model repository.

The following table shows the available team-based development features in each product:

Team-based Development Feature	PowerCenter Repository	Model Repository
Versioning of repository objects	Built-in to PowerCenter repository	Available through integration with a third-party version control system
Delete or purge the object version	Available	Not available
Check out and check in objects	Available	Available
Reassign checked out object to another user	Not available	Available
View a list of checked out objects	Available	Available
View and open read-only historical versions of objects	Available	Available
View and compare multiple versions of objects at the same time	Available	Not available
Replace current version of an object with historical version	Not available	Available
Apply labels to objects	Available	Not available
Deployment of multiple objects	Available	Not available

Versioning Repository Objects

You can store multiple versions of objects in the PowerCenter repository and the Model repository. You can configure a PowerCenter or Model repository for versioning when you create it.

In PowerCenter, you can upgrade an existing repository to support versioned objects. The PowerCenter repository stores object versions locally.

You can integrate a Model repository with a supported third-party version control system such as Perforce and Subversion. The Model repository stores object versions in the version control system.

Enable version control for the PowerCenter repository in the Administrator tool. Click the **Manage** tab > **Services and Nodes** view.

To integrate the Model repository with a version control system, perform the following tasks:

1. Install or upgrade to Informatica version 10.0.
2. If you are upgrading from a previous version of Informatica, upgrade the Model repository to version 10.
3. Configure versioning properties for the Model repository.
4. Synchronize the Model repository with the version control system.

For more information about enabling versioning for the PowerCenter repository and the Model repository, see the *Informatica Application Service Guide*.

Check Out and Check In Objects

A PowerCenter repository or Model repository object is in read-only mode until a user checks it out. Check out an object to edit it, and check the object in to the repository when you finish editing.

When you undo the checkout of a checked out object, any changes you made to the object are lost. Undoing a checkout removes the latest checked out version from the repository, and the most recently checked in object becomes the latest version in the repository.

The PowerCenter repository uses passive protection for checked out objects. If another user tries to edit an object that you checked out, the PowerCenter repository informs them of the potential conflict only when they try to check in their changes.

The Model repository uses active protection for checked out objects. If another user tries to edit an object that you checked out, the Model repository informs them of the potential conflict when they begin to edit the object.

Checking Out and Checking In Objects from the PowerCenter Repository

You can check out and check in objects in the Designer, Repository Manager, and Workflow Manager.

When you save the object, you commit changes to the repository. Until you check in the object, other users can view it, but not edit it.

Checking in an object adds a new version to the object history.

Checking Out and Checking In Objects from the Model Repository

When you edit an object in a versioned Model repository, the Model repository automatically checks out the object to you.

Alternatively, you can manually check out an object. Right-click an object in the **Object Explorer** and select **Check Out**.

To check in a checked out object, use the **Checked Out Objects** view, or right-click the object in the **Object Explorer** view and select **Check In**.

View a List of Checked Out Objects

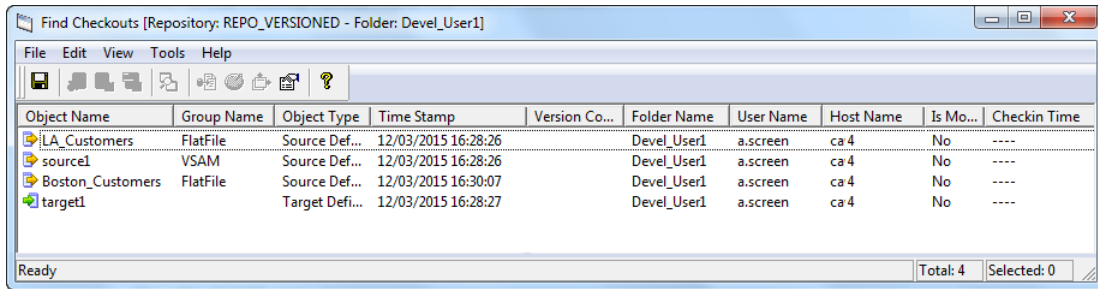
You can view a list of checked out repository objects. The selection of checked out objects that you can view depends on the repository type.

Viewing a List of Checked Out PowerCenter Repository Objects

When you view the list of checked out PowerCenter objects, you see objects that you and other users checked out.

To view the list of checked out objects, select **Versioning > Find Checkouts**.

The following image shows the **Find Checkouts** window:

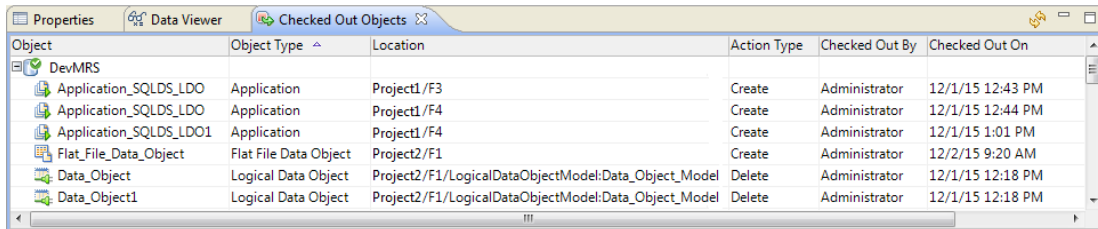


Viewing a List of Checked Out Model Repository Objects

You can view lists of checked out Model repository objects. The set of objects depends on privileges and the tool that you use.

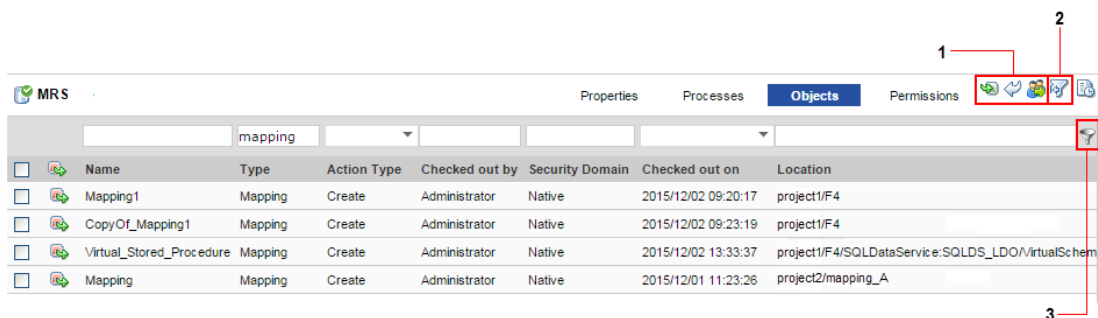
In the Developer tool, you can view only the objects that you checked out. To view the list of checked out objects, open the **Checked Out Objects** view.

The following image shows the **Checked Out Objects** view:



In the Administrator tool, you can view the objects that all users checked out. To view the list of checked out objects, open the **Objects** tab and filter the list of objects.

The following image shows the **Objects** tab with a filter on the Type column:



1. Action buttons
2. Reset Filter button

3. Filter button

View and Open Historical Versions of Objects

You can view the history of objects in a versioned PowerCenter or Model repository, and open a read-only instance of any of the listed versions.

From the PowerCenter repository, you can open a historical version of an object and compare it with the current version. From the Model repository, you can open only one historical version of an object. You cannot compare it directly to another version.

From the Model repository, you can restore a historical version. For example, you can see a list of five different versions of an object and restore version 3. Version 3 becomes the latest version of the object, version 6. From the PowerCenter repository, you can only view previous versions. You cannot restore previous versions.

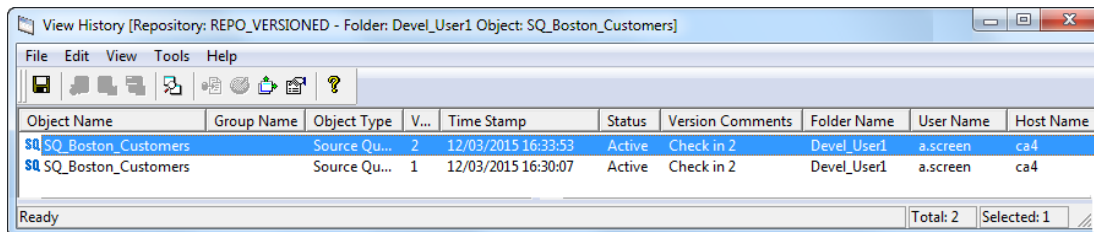
View PowerCenter Repository Historical Objects

You can view PowerCenter repository object history in the Designer, Repository Manager, and Workflow Manager.

To view object version history in the Repository Manager, right-click the object in the Main window or the Navigator and click **Versioning > View History**.

To view object version history in the Designer or Workflow Manager, select the object and click **Versioning > View History**.

The following image shows the **View History** window:

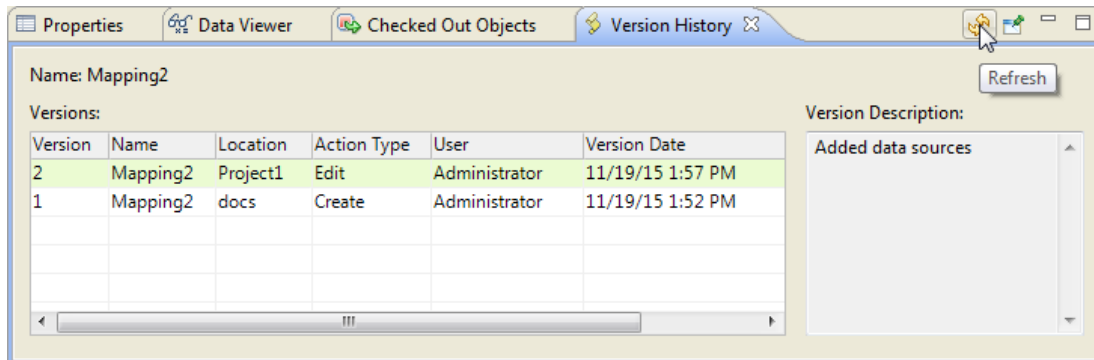


Viewing and Opening Model Repository Historical Objects

You can view the version history of Model repository objects. You can open a historical version, and then save the historical version as a new object, or replace the current version.

To view the history of an object, right-click the object in the **Object Explorer** and select **View Version History**.

The following image shows the **Version History** view:



Tip: If the **Version History** view was open before the last check-in, click **Refresh** to populate the view with the latest versions.

To open one of the versions in the **Version History** window, double-click it. The Developer tool opens a read-only version of the object, and lists the version number in the title bar of the editor window.

You can save the read-only version of the object as a new object, or replace the current version of the object with the open version.

Author

Mark Pritchard
Principal Technical Writer